

# **London 2012 Boccia Competition - Update and Information**

**August 2011**



# Agenda

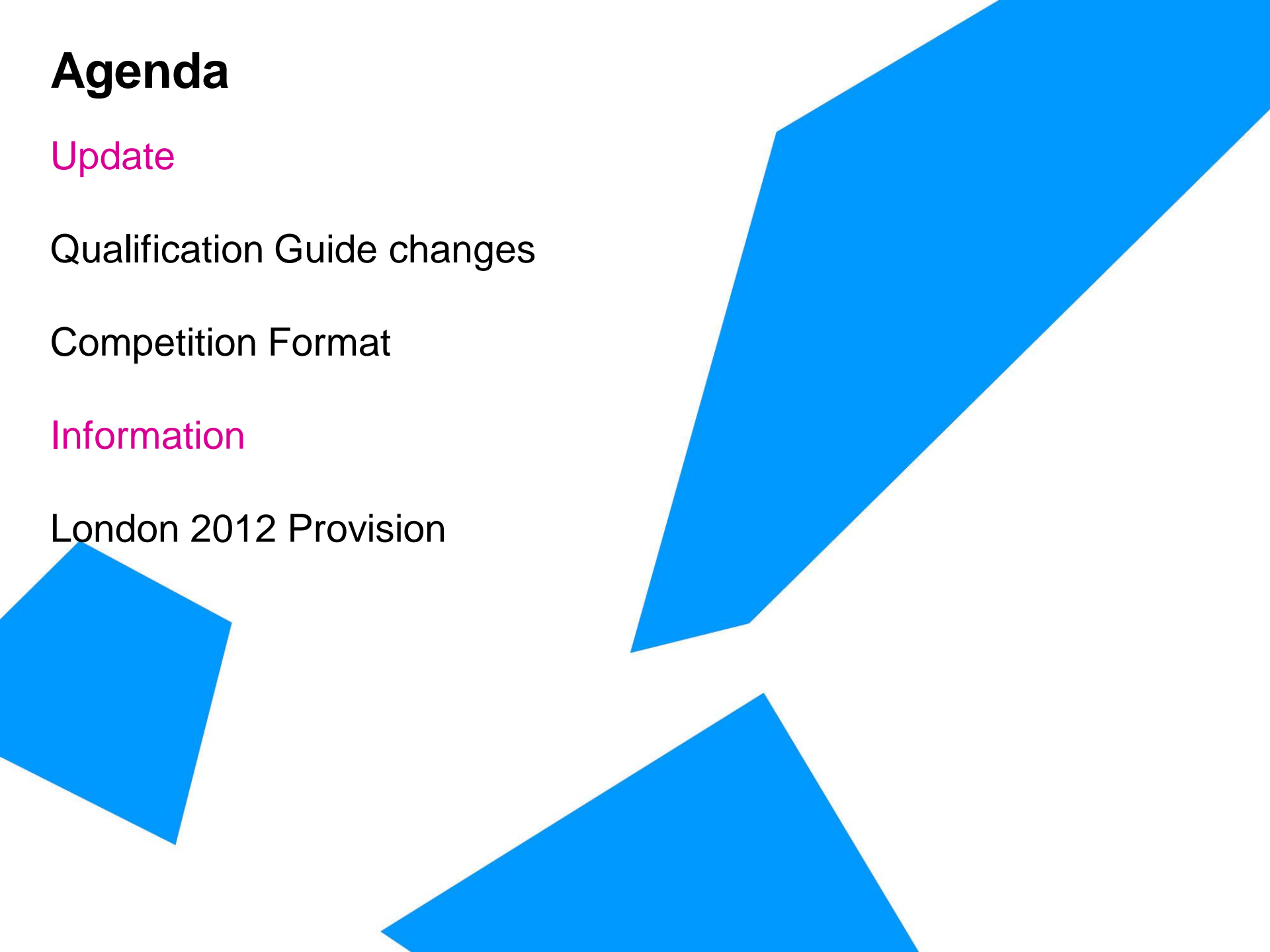
## Update

Qualification Guide changes

Competition Format

## Information

London 2012 Provision



# Paralympic Games Qualification Guide update

Changes since 2008 (on the IPC website, dated April 2011)

- Teams and Pairs still qualify in the same way
- NPCs still decide which players they want to send for the Team and Pairs events
- However, athletes will only be guaranteed a place in the Individual event if they have a world ranking that is higher than, or equal to, the number of athletes in that event
- Athletes who don't meet this criteria may not qualify for the Individual event
- Athletes from NPCs who have not qualified for the Team and Pairs event, but who individually have a world ranking that is higher than, or equal to, the number of athletes in the event may be invited by CBC to compete in the individual event
- This is subject to a maximum quota – BC1 – 4, BC2 – 4, BC3 – 6, BC4 – 2
- An athlete who qualifies for the individual event only will replace the lowest-ranked athlete who played in the Team or Pairs event

## Using the BC4 Events and the current World Rankings as an example –

### 1. The BC4 Pairs Event

- The top seven (7) Pairs qualify
- The Host Country will qualify, subject to being on the ranking list.
- If the Host Country is in the top 7, another slot is allocated to the next highest ranked NPC (ranked 8<sup>th</sup>)
- Each NPC can name any athlete to represent them, as long as they are on the Individual World Ranking list and fulfil the eligibility criteria

Rank	Country
<u>1</u>	Brazil
<u>2</u>	Great Britain
<u>3</u>	Portugal
<u>4</u>	Hong Kong
<u>5</u>	Czech Republic
<u>6</u>	Slovakia
<u>7</u>	Spain
8	Hungary

## 2. The BC4 Individual Event

- We will assume that each nation that played in Pairs BC4 will select their highest-ranked players (numbers shown in black)
- Now we will look at those players whose NPCs did not qualify for the Pairs event, but who are in the top 16 (because there will be 16 players in the Individual event) (red numbers)
- **The maximum quota of replacement athletes for BC4 is 2, so players ranked 9 & 10 will be invited**
- The 2 athletes ranked at 9 and 10 will replace the lowest-ranked Pairs athletes, ranked 27 and 32
- **If 9 or 10 decline the offer, 12 or 13 may be invited, and would still replace 27 and 32**

Rank	Name	Country
<u>1</u>	<u>Pinto</u>	<u>Brazil</u>
<u>2</u>	<u>Pereira</u>	<u>Portugal</u>
<u>3</u>	<u>McGuire, S</u>	<u>Great Britain</u>
<u>4</u>	<u>Santos</u>	<u>Brazil</u>
<u>5</u>	<u>Beres</u>	<u>Hungary</u>
<u>6</u>	<u>Leung</u>	<u>Hong Kong</u>
<u>7</u>	<u>Dueso</u>	<u>Spain</u>
<u>8</u>	<u>Lau</u>	<u>Hong Kong</u>
<b><u>9</u></b>	<b><u>Seo</u></b>	<b><u>Korea</u></b>
<b><u>10</u></b>	<b><u>Kanavas</u></b>	<b><u>Greece</u></b>
<u>11</u>	<u>Prochazka</u>	<u>Czech. Rep.</u>
12	VanderVies	Canada
13	Cheung	Hong Kong
<u>14</u>	<u>McGuire, P</u>	<u>Great Britain</u>
15	Qi	China
16	Zheng	China
18	Durkovic	Slovakia
19	Streharsky	Slovakia
21	Gyurkota	Hungary
22	Clara	Portugal
27	Baixauli	Spain
32	Kadlecova	Czech. Rep.

## Other points to note

- Teams and Pairs continue to qualify via their NPC
- Invitations to play only in the individual event are to the athlete, *not* the NPC
- The timelines for notification and entry have therefore changed –
  - March 2<sup>nd</sup>- CPISRA notifies countries about Team and Pairs qualification
  - March 16<sup>th</sup> – NPCs confirm entries and name athletes
  - March 17<sup>th</sup> CPISRA confirms and invites individual athletes
  - March 26<sup>th</sup> NPCs confirm individual entries
  - April 9<sup>th</sup> CPISRA reallocates unused slots and confirms size of BC1 and BC2 events
  - April 20<sup>th</sup> Deadline for accreditation application forms to LOCOG (long list)
  - August 6<sup>th</sup> Deadline for Sports entries to LOCOG



# Competition Format update

## Changes for London

- The Team and Pairs format remains the same as before; Round Robin Pools followed by knock-out final stages
- The Individual events will be a Single Elimination format (usually known as a 'Knockout')
- There will be extra 'seeding' matches for athletes who are only competing in the individual event
- No more than half of the athletes in any event will be allocated a 'seed' position in the bracket; the rest of the positions will be drawn
- Where there are not exactly 16 or 32 athletes in an event, some athletes will receive a 'bye' through to the next round
- There will be 'classification matches' in all individual events, to rank athletes from 5<sup>th</sup> to 8<sup>th</sup> position



## Team BC1/BC2

12 teams placed in to 4 Pools  
according to their World Ranking –  
A= Teams ranked 1, 8 and 9  
B = 2, 7 and 10  
C = 3, 6 and 11  
D = 4, 5 and 12

Each team plays each other team in the Pool.

The top two teams in each Pool will progress to the quarter-finals.

Finals and bronze play-offs determine places 1-4



## Pairs BC3 and BC4

8 Pairs placed in to 2 Pools according to their World Ranking –

Pool A = 1,4,5,8

Pool B = 2,3,6,7

Each pair plays each other pair in the Pool.

The top two pairs in each Pool will progress to the semi-finals.

Finals and bronze play-offs determine places 1-4



## Individual events

This example is for BC4

- 16 players
- The top 8 seeds (the 8 players with the highest World Rankings) are placed in the draw as shown (no's 1-8)
- The next 8 players are drawn out to see who will play where – the first player drawn will play against the first seed, the 2<sup>nd</sup> against the 2<sup>nd</sup> seed...
- The winners from the first round will progress to the Quarter-finals
- The losers will take no further part in the competition

<u>First round</u>	<u>Quarter-finals</u>	<u>Semi-finals</u>	<u>Final</u>
1	Winner		
Player		Winner	
Player	Winner		
8			Winner
5	Winner		
Player		Winner	
Player	Winner		
4			
3	Winner		
Player		Winner	
Player	Winner		
6			Winner
7	Winner		
Player		Winner	
Player	Winner		
2			

## Seeding matches

These are only for those players who have not played in the Team or Pairs competition

If there are an odd number of qualifiers, the highest ranked qualifier will go straight in to the first round proper

If there are 2 or more qualifiers then the highest ranked will play against the next highest ranked, and so on

The winner of each seeding match will take the higher of the two seeding positions

BC3 Seeding matches	Position in draw
(3) Mohammed Taha	Winner = 3 in draw
(7) Cronin	<i>Loser = 7</i>
(13) Hogrell	Winner =13 in draw
(14) Kato	<i>Loser = 14</i>
(16) Dong	Winner =16 in draw
(17) Hanson	<i>Loser = 17</i>





## Getting a 'bye'

### Example for BC3 individual event (top half of draw only)

There are 24 athletes in the first round, but a perfect bracket would need 32

This means that there are 8 athletes who cannot have a match in the first round – these must be the 8 highest ranked athletes

Therefore all athletes seeded 1 to 8 get a 'bye', which means they are placed straight in to the second round

All athletes ranked 9 to 24 will play a match in the first round

Firstly, athletes 9-16 will be drawn and placed in the bracket in 'draw' positions, then athletes ranked 17-24 will be drawn for 'draw2' positions.

First round 24 players	2 <sup>nd</sup> round 16 players	Quarter- finals	Semi-finals
	<b>1<sup>st</sup> seed</b>		
1st draw 2			
1 <sup>st</sup> draw			
8 <sup>th</sup> draw			
8 <sup>th</sup> draw 2			
	<b>8<sup>th</sup> seed</b>		
	<b>5<sup>th</sup> seed</b>		
5 <sup>th</sup> draw 2			
5 <sup>th</sup> draw			
4 <sup>th</sup> draw			
4 <sup>th</sup> draw 2			
	<b>4<sup>th</sup> seed</b>		
<i>(The second half of the draw would continue below)</i>			

## 5<sup>th</sup> – 8<sup>th</sup> classification matches

The 4 players eliminated in the quarter-finals of individual events will play further matches to determine 5<sup>th</sup> to 8<sup>th</sup> positions.

The position of the quarter-final losers in the 5<sup>th</sup>-8<sup>th</sup> place matches will be determined by their points difference in their last game. The player with the least points difference will play against the player with the greatest points difference. The other two players will play each other.

The 2 winners of the games will play each other for 5<sup>th</sup> and 6<sup>th</sup> place.

The 2 losers will play each other for 7<sup>th</sup> and 8<sup>th</sup> place.

5 <sup>th</sup> to 8 <sup>th</sup> classification matches		
Highest points difference	winner	
Lowest points difference		Winner = 5 <sup>th</sup> place over all
Middle points difference	winner	Loser = 6 <sup>th</sup> place over all
Middle points difference		
	Loser 1	Winner = 7 <sup>th</sup>
	Loser 2	Loser = 8 <sup>th</sup>

# Agenda

London 2012 provision

Venue design – ExCeL

Anti-Doping

Athlete's Village

Test Event





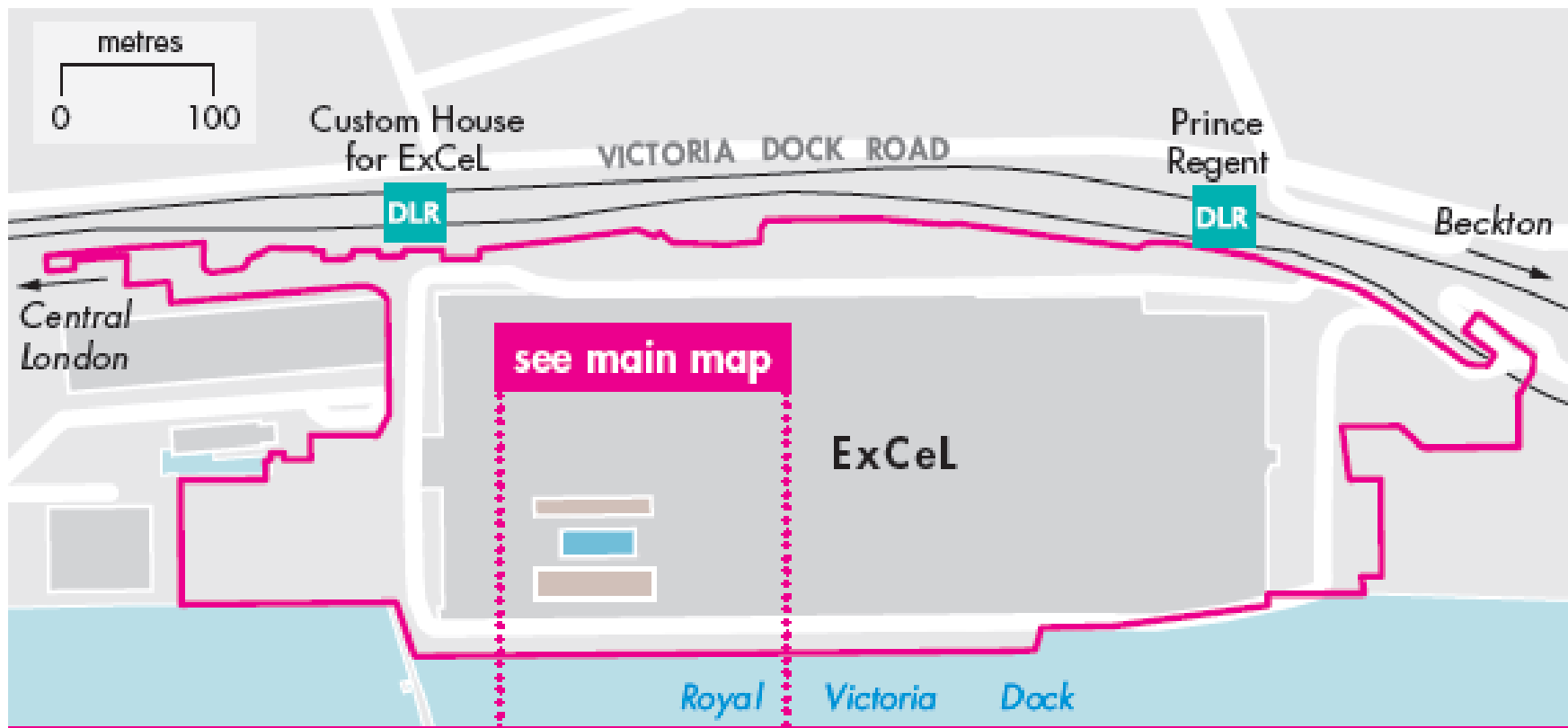


## Key points for ExCeL

- 6 sports in 5 arenas – Boccia, Table Tennis, Judo, Sitting Volleyball, Fencing, Powerlifting
- A day pass for all sports will cost £10; you can come to both Boccia sessions but you won't have a guaranteed seat
- A ticket for Boccia costs £15 and guarantees a seat in the session specified, as well as access to all other sports in the venue for the rest of the day
- An estimated 20minute drive from the Athlete's Village
- Also linked to the Olympic Park by the Docklands Light Railway
- Internally designed to our specifications



# ExCeL





## Key points for Boccia

- 5 courts; centre court used for finals
- Athlete seating podium *plus* athlete seating on north side of arena
- Mondo sprung flooring
- One warm-up court *per side* throughout the competition
- Classification room includes a court
- Athlete's lounge, changing and rest areas provided
- Sports Information desk
- Wheelchair repair provision
- Equipment repair room provided for countries to use themselves – basic tool kit included
- Separate toilet provided for medical time-outs, call room emergencies, use by officials etc.





## Anti-Doping – What's new for London 2012 ?

- Selected athletes who would need an assistant for sample collection but don't have that assistant with them on court – your designated assistant will be required to meet you at the end of the mixed zone after every match. It is recommended by IPC that you have a copy of the TUE (Therapeutic Use Exemption) Certificate with you, if you have one.
- We now have formal approval for your assistant to assist during sample collection:
  - Gloves will be provided
  - Once the sample is collected, it will be acceptable to put the collection vessel down in view of the athlete
  - Anti-Doping staff recognise the needs of Boccia athletes
- The Doping Control Station is in the Sitting Volleyball back-of-house area, and will be shared across the two sports. It has 4 processing rooms, all suitable for Paralympic athletes.

# The Paralympic Village



# Living Room





# Bedroom





## The 'London Prepares' Boccia Test Event

- May 4<sup>th</sup> – 7<sup>th</sup> 2012
- Basketball Arena (in Olympic Park)
- Part of a cluster of Test Events
- 40 athletes
- International Invitational event
- Testing aspects of games-time delivery such as workforce, results and transport
- 8 BC1 players in individual competition
- 12 BC3 players
- 8 BC1/BC2 Teams of three
- 8 BC3 Pairs of two
- (Sorry, no BC4s) ☹







## Test Event details

- LOCOG will endeavour to invite every nation who qualifies for London (Great Britain will be invited in all events)
- Each invitation will be specific for either a Team or BC3 Pair (usual CPISRA rules on Team and Pair composition will apply)
- Each Team will be invited to nominate one BC1 athlete for the individual event on the Saturday
- Each Pair will be invited to nominate one BC3 athlete for the individual event, and four others will be invited at random.
- Each country will be expected to finance their own travel and accommodation (good rates have already been negotiated at the Crowne Plaza hotel near ExCeL, where breakfast and evening meals will be taken)
- LOCOG will provide transport, lunches, drinks and medals
- The same Mondo flooring will be used as for games-time
- We hope to put on a visit to ExCeL and to give an update on games-time provision
- Tickets will be given away, with Boccia fans getting first chance
- On Saturday May 5<sup>th</sup> we may have 6,000 spectators!

Questions?

See you in London! 😊



## Worldwide Paralympic Partners

The logo for Atos, featuring the word "Atos" in a blue, sans-serif font.The logo for Samsung, featuring the word "SAMSUNG" in white, uppercase letters inside a blue oval.The logo for Visa, featuring the word "VISA" in a blue, sans-serif font with a yellow checkmark-like shape above the "I".

## London 2012 Official Paralympic Partners

The logo for Adidas, featuring three black stripes and the word "adidas" in a black, sans-serif font.The logo for BMW, featuring a black circle with a white cross and the letters "B M W" in black.The logo for bp, featuring a green sun-like shape with the letters "bp" in green above it.The logo for British Airways, featuring the words "BRITISH AIRWAYS" in blue, uppercase letters with a red and blue swoosh above the "S".The logo for BT, featuring the letters "BT" in blue, uppercase letters with a colorful globe icon to the right.The logo for Coca-Cola, featuring the words "Coca-Cola" in a red, cursive script.The logo for EDF, featuring a red flower-like shape and the letters "EDF" in blue, uppercase letters.The logo for GE, featuring a blue circle with a white "G" and the letters "GE" in blue, uppercase letters.The logo for Lloyds TSB, featuring a small green square with a white horse and the words "Lloyds TSB" in black, uppercase letters.The logo for Omega, featuring the Greek letter "Ω" in red above the word "OMEGA" in red, uppercase letters.The logo for P&G, featuring the letters "P&G" in blue, uppercase letters.The logo for Sainsbury's, featuring the word "Sainsbury's" in orange, uppercase letters.

## London 2012 Official Paralympic Supporters

The logo for Adecco, featuring the word "Adecco" in white, lowercase letters inside a red rectangle.The logo for ArcelorMittal, featuring a red stylized "A" above the word "ArcelorMittal" in black, lowercase letters.The logo for Cadbury, featuring the word "Cadbury" in a purple, cursive script.The logo for Cisco, featuring a blue and red stylized "C" above the word "CISCO" in red, uppercase letters.The logo for Deloitte, featuring the word "Deloitte" in blue, uppercase letters with a green dot above the "e".The logo for Thomas Cook, featuring the words "Thomas Cook" in white, uppercase letters inside a blue circle.The logo for UPS, featuring the word "ups" in white, lowercase letters inside a gold shield.

## London 2012 Official Paralympic Suppliers and Providers

Aggreko, Airwave, Atkins, Boston Consulting Group, CBS Outdoor, Crystal CG, Eurostar, Freshfields Bruckhaus Deringer LLP, G4S, GlaxoSmithKline, Gymnova, Heineken UK, Holiday Inn, John Lewis, McCann Worldgroup, Mondo, Next, The Nielsen Company, Otto Bock, Populous, Rapiscan Systems, Rio Tinto, Technogym, Thames Water, Ticketmaster, Trebor.

# Thank You

The official Emblem of the London Organising Committee of the Olympic Games and Paralympic Games Ltd is protected by copyright. © London Organising Committee of the Olympic Games and Paralympic Games Ltd 2007. All rights reserved.

